



# William Wallace

Arranger, Publisher

United States (USA), Apex

## About the artist

I am originally from Oklahoma, and now make my home in North Carolina. I work in the environmental community, and arrange these pieces as a hobby.

Individuals and non-profit organizations have my permission to play, without charge, all arrangements by William Wallace at free-scores.com for occasions as you may require.

I represent that I am the copyright holder for my music arrangements at free-scores.com, and own all rights. I am responsible for any issues concerning copyright. At your discretion, please credit these works as "used with permission of W. Wallace - Apex, NC".

William Wallace  
www.easybyte.org

**Personal web:** <http://www.easybyte.org>

## About the piece



**Title:** O Holy Night / Cantique de Noël  
**Composer:** Adam, Adolphe Charles  
**Arranger:** Wallace, William  
**Licence:** Copyright © William Wallace  
**Instrumentation:** Piano solo  
**Style:** Christmas, Carols

## William Wallace on free-scores.com

<http://www.free-scores.com/Download-PDF-Sheet-Music-oracle2world.htm>

- Contact the artist
- Write feedback comments
- Share your MP3 recording
- Web page and online audio access with QR Code :



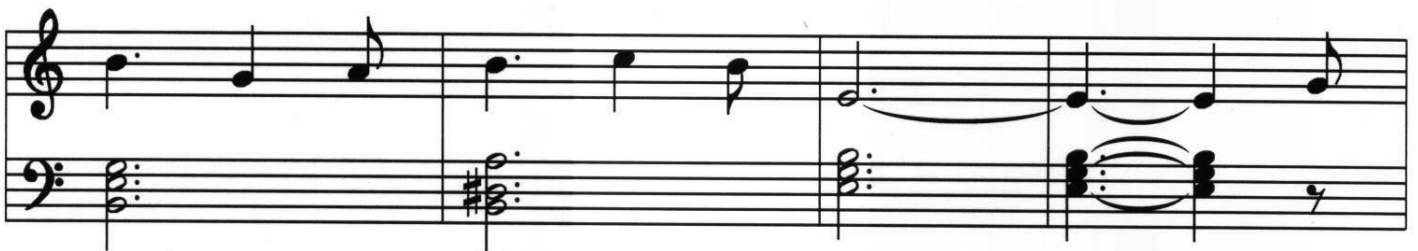
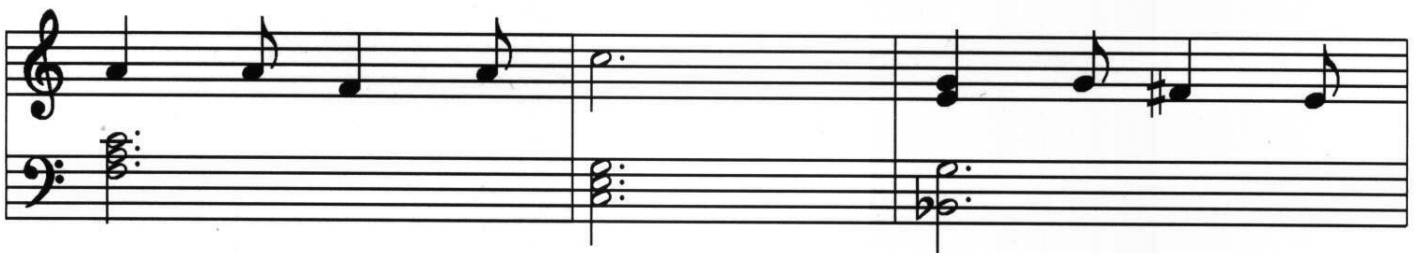
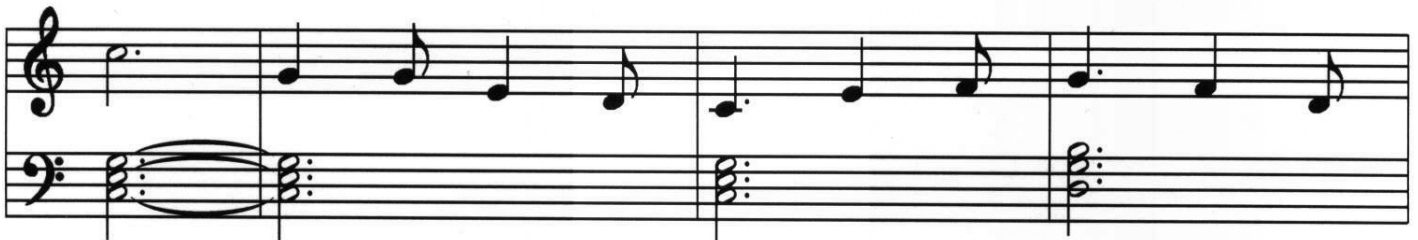
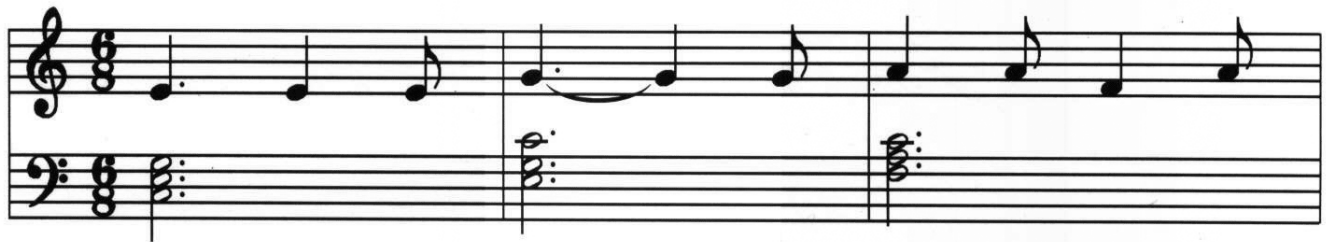
This work is not Public Domain. You must contact the artist for any use outside the private area.

# O Holy Night / Cantique de Noël

Adolphe Adam (1803-1856)

Arranged William Wallace

Copyright © 2004





The image displays two systems of musical notation, each consisting of a treble and a bass staff. The first system (top) features a treble staff with a half note, a quarter note, a dotted half note, and a quarter note, with a slur over the first two notes. The bass staff provides a harmonic accompaniment with chords in the first three measures and a double eighth-note chord in the fourth measure, marked with a '2'. The second system (bottom) continues the melody in the treble staff with a half note, a quarter note, a quarter note, and a half note, with a slur over the last two notes. The bass staff continues the accompaniment with chords in the first two measures and a double eighth-note chord in the third measure, marked with a '2'. The fourth measure of the second system shows a final chord in the bass staff.